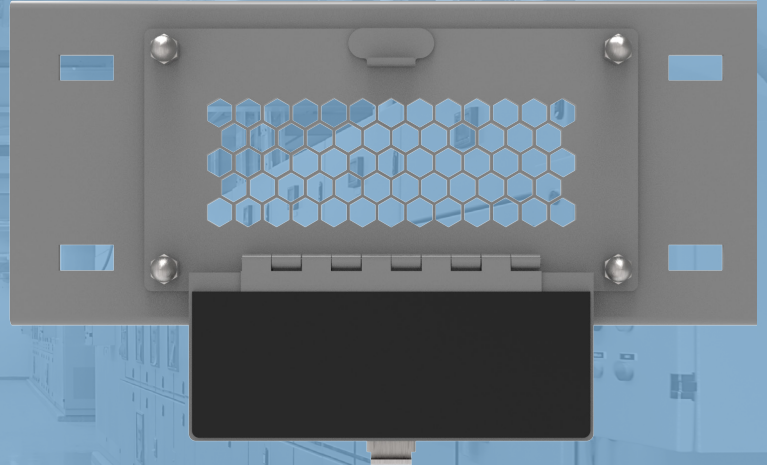


CAP-BCC Series

Eaton Pow-R-Way III Busway Joints Are Now Inspectable



UL Certification

The CAP-BCC Busway joint cover has been certified by UL both as an infrared window under the IRISS blanket custom window file and with the OEM as an approved component of their busway system.

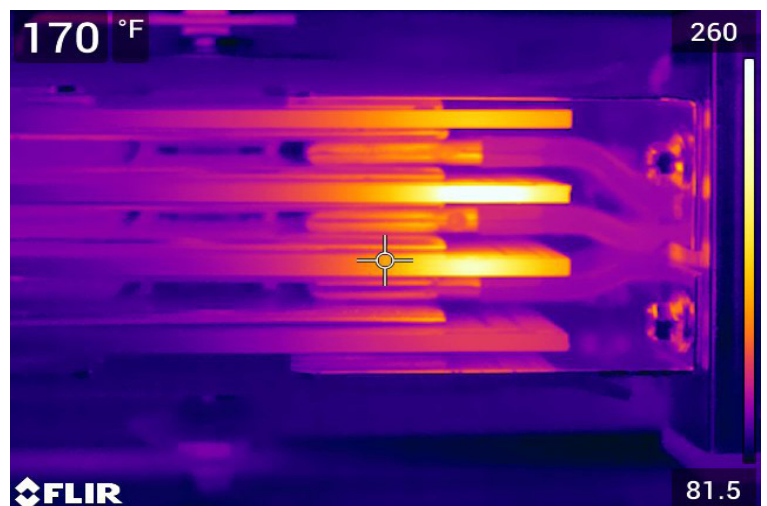
Durable and Rugged

Polymer based IR windows are far more able to resist the mechanical stresses applied to the IR window fitted to electrical distribution equipment.

Stress-Free Viewing

The polymer based infrared window maintains fixed and stable transmission (FAST) for life as the polymer is unaffected by environmental and mechanical stresses commonly seen with crystal based infrared windows.

Enhance your Condition-Based Maintenance program using the UL Listed Busway Joint Cover from IRISS for Eaton Pow-R-Way III. The joint cover incorporates an infrared window with cover which, when opened, provides a direct Field of View of the internal electrical connections. Safe and routine Infrared inspections are now possible on busway joints insuring that any anomaly will be detected long before a failure occurs. Busway joints, at a minimum, should be inspected annually. However, critical power applications such as data centers, airports, hospitals and some industrial sites may require more frequent inspections. A “Zero Downtime” goal requires maintenance teams to find an asset that is deteriorating and fix it before it fails. The Busway Joint Cover enables the maintenance team to inspect the assets at any time in a safe and guarded condition. The Busway Joint Cover, used within a Condition-Based Maintenance program, ultimately saves time and money.



Specifications

Part Number	CAP-BCC-475	CAP-BCC-494	CAP-BCC-531	CAP-BCC-550
General Specifications				
Overall Height	12.07 cm (4.75 in)	12.55 cm (4.94 in)	13.49 cm (5.31 in)	13.97 cm (5.50 in)
Overall Width	32.72 cm (12.88 in)	32.72 cm (12.88 in)	32.72 cm (12.88 in)	32.72 cm (12.88 in)
IP/ NEMA Environment Rating	IP20 / NEMA 1			
Operating Temperature	-40°C (-40°F) to 273°C (523°F)			
Body Material	Powder Coated 5052 Aluminum			
Gasket Material	UL 94 5VA TPE; -40°C (-40°F) to 273°C (523°F)			
Hardware Material	316 Stainless Steel			
Voltage / Current Range	600V and Below / From 225A up to 4000A Aluminum or 5000A Copper			
Automatically Grounded	Yes			
Optic Specifications				
Viewing Aperture Height	5.51 cm (2.17 in)	5.51 cm (2.17 in)	5.51 cm (2.17 in)	5.51 cm (2.17 in)
Viewing Aperture Width	15.82 cm (6.23 in)	15.82 cm (6.23 in)	15.82 cm (6.23 in)	15.82 cm (6.23 in)
Optic Material	Poly-View™ UL 746 compliant, visual, UV and IR transmissive polymer; -40°C (-40°F) to 325°C (617°F)			
Optic Reinforcing Grill Material	Aluminum Reinforcing Grill (IP22/ IP2x Standard)			
Inspection Capabilities and Applications				
Midwave IR and Longwave IR; Ultraviolet (UV); Visual Inspection; Medium/High Voltage Applications				
Certifications				
Certified by UL (USA) & cUL (Canada) to the following standards: UL 857, NEMA 1, CSA C22.2 No. 27-94, UL Listing 491496 as a Custom IR Window				
Other				
Warranty	Unconditional Lifetime Warranty			

Busway Joint Cover Size Chart			
Phase-Wire Configuration	Ground Configuration	Joint Cover Required (IRISS Part Number)	Width
3 Phase, 3 Wire	Integral	CAP-BCC-475	4.75"
3 Phase, 3 Wire	50% Internal	CAP-BCC-494	4.94"
3 Phase, 3 Wire	50% Internal/ Isolated	CAP-BCC-494	4.94"
3 Phase, 3 Wire	100% Internal	CAP-BCC-494	4.94"
3 Phase, 4 Wire 100% Neutral	Integral	CAP-BCC-475	4.75"
3 Phase, 4 Wire 100% Neutral	50% Internal	CAP-BCC-494	4.94"
3 Phase, 4 Wire 100% Neutral	50% Internal/ Isolated	CAP-BCC-494	4.94"
3 Phase, 4 Wire 100% Neutral	100% Internal	CAP-BCC-494	4.94"
3 Phase, 4 Wire Oversized Neutral	Integral	CAP-BCC-531	5.31"
3 Phase, 4 Wire Oversized Neutral	50% Internal	CAP-BCC-531	5.31"
3 Phase, 4 Wire Oversized Neutral	50% Internal/ Isolated	CAP-BCC-550	5.50"
3 Phase, 4 Wire Oversized Neutral	100% Internal	CAP-BCC-550	5.50"

Specifications are subject to change without notice. For the most up-to-date specs, go to www.iriss.com

North America (HQ)
+1 (941) 907 9128

LATAM
+1 (941) 704-4445

EMEA
+44 (0) 1245-399-713

APAC
+1 (941) 524-3340



www.iriss.com