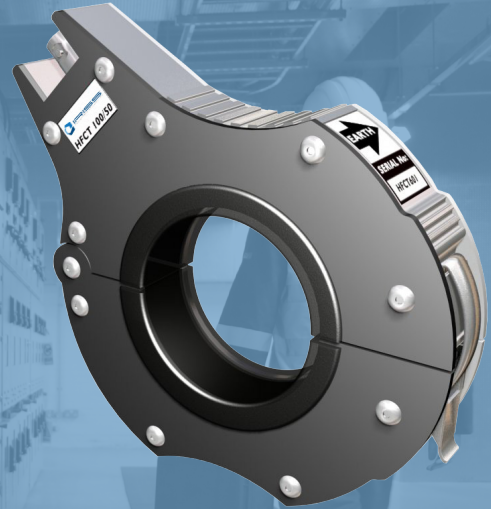


# Sonus HFCT PD Sensor

High Frequency Current Transformer



## Focused Design

The high-frequency, durable transducer is specifically designed to pick up the various forms of Partial Discharge and TEV that can occur in electrical systems.

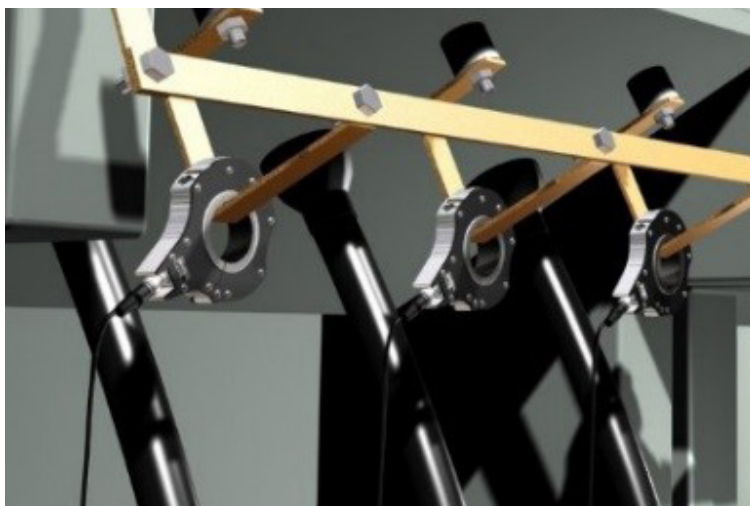
## Detection & Prevention

Early detection of Partial Discharge allows the Reliability Team to regularly assess operational health, preventing critical asset failure over time.

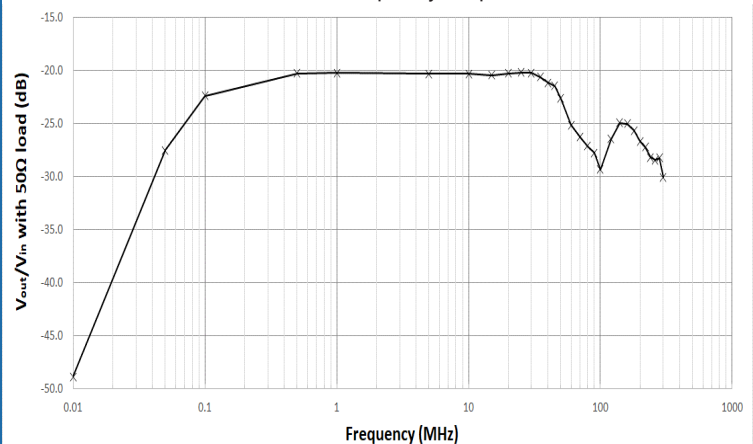
## Compatibility

Can be used with Sonus PD Alert, Sonus PD Pro and Sonus PD-X to find bubbles in liquid-filled transformers, voids in insulation, and faults around connections or across surfaces.

Online testing for Transient Earth Voltage (TEV) is the fastest way to determine if a fault condition is present in High Voltage Electrical Gear. TEV occurs as voltage-induced spikes emit out from the source, creating current spikes in the conductor and earthed metal surrounding the conductor. These occurrence will happen in the 0-200 MHz's range. Partial Discharge can occur in voids in solid insulation caused by defects in manufacturing or damage during installation, bubbles in liquid filled transformers, around connections, or across surfaces. Sonus HFCT PD Sensor is a high-frequency transducer specifically designed for picking up TEV & Partial Discharge signals. This activity in solid high-voltage insulation induces small high frequency currents in the earth conductor of the electrical system and the impulses travel along equipment earth to substation earth. Using a high frequency current transformer, they can be detected as they pass through the Sonus PD HFCT Sensor.



Sonus HFCT Frequency Response



# Specifications

Part Number	Sonus HFCT PD Sensor
Sensor Specifications	
Transfer Function	4.8 V/A
Frequency Response	60kHz – 70MHz
Rec. Load Impedence	50Ω
Dimensions	
Internal Diameter	48 mm
External Diameter	107 mm
Weight	0.46 kg
Hardware	
Coupling	Quick Release Clip
Connector	
Connector	BNC Female
Other	
Warranty	12 Month Limited Warranty

Specifications are subject to change without notice. For the most up-to-date specs, go to [www.iriss.com](http://www.iriss.com)

North Ameriaca (HQ)  
+1 (941) 907 9128

LATAM  
+1 (941) 704-4445

EMEA  
+44 (0) 1245-399-713

APAC  
+1 (941) 524-3340



**IRISS**  
ENGINEERED RELIABILITY

[www.iriss.com](http://www.iriss.com)