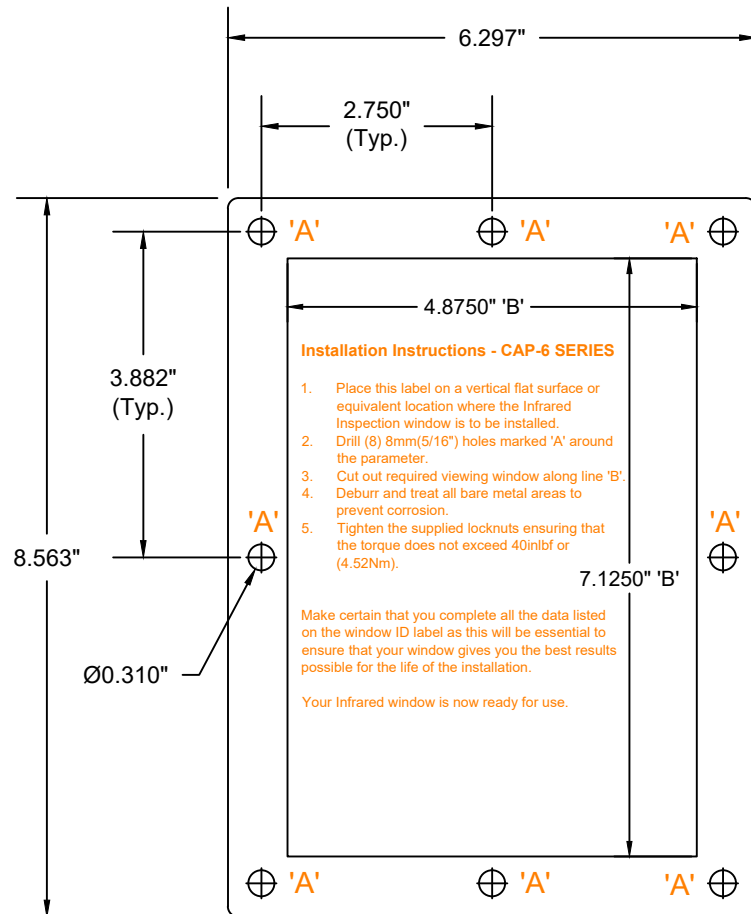


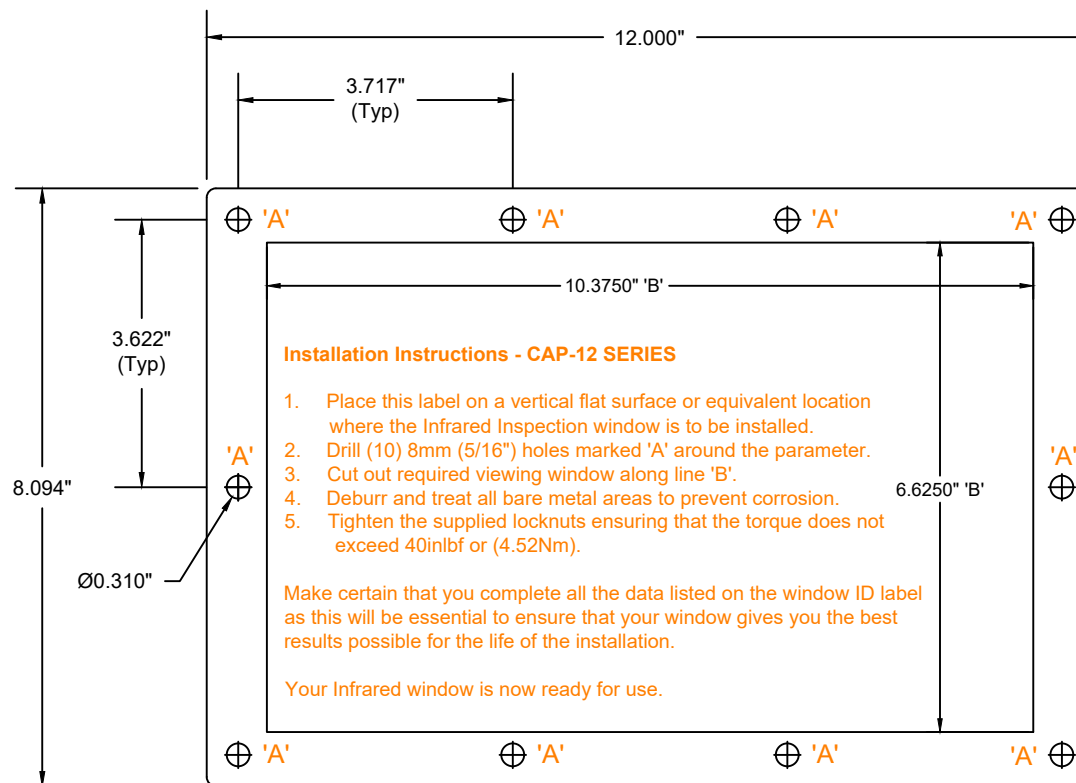
## CAP-4

NOTE: Drawings on the PDF file - not to scale



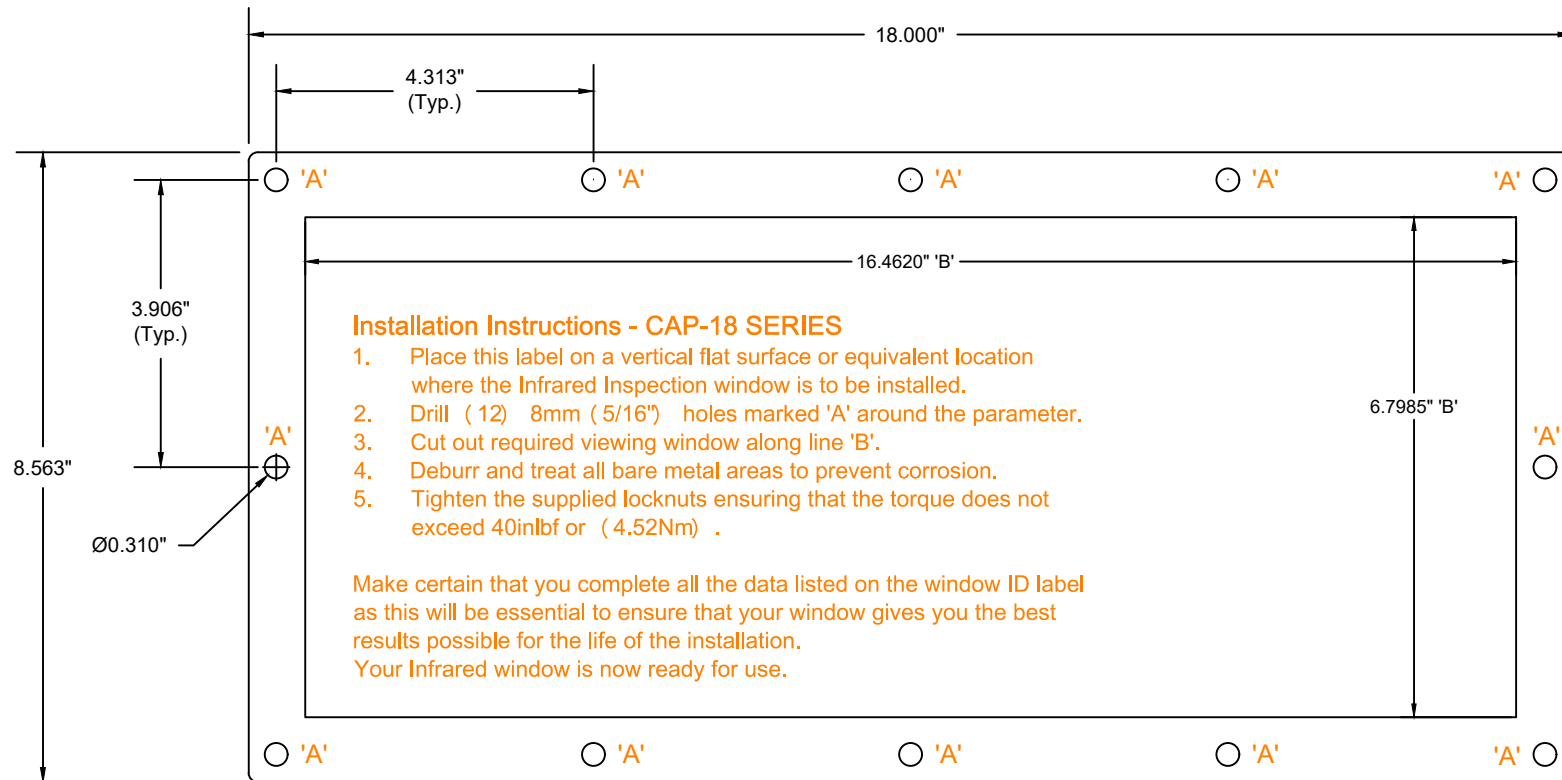
## CAP-6

NOTE: Drawings on the PDF file - not to scale



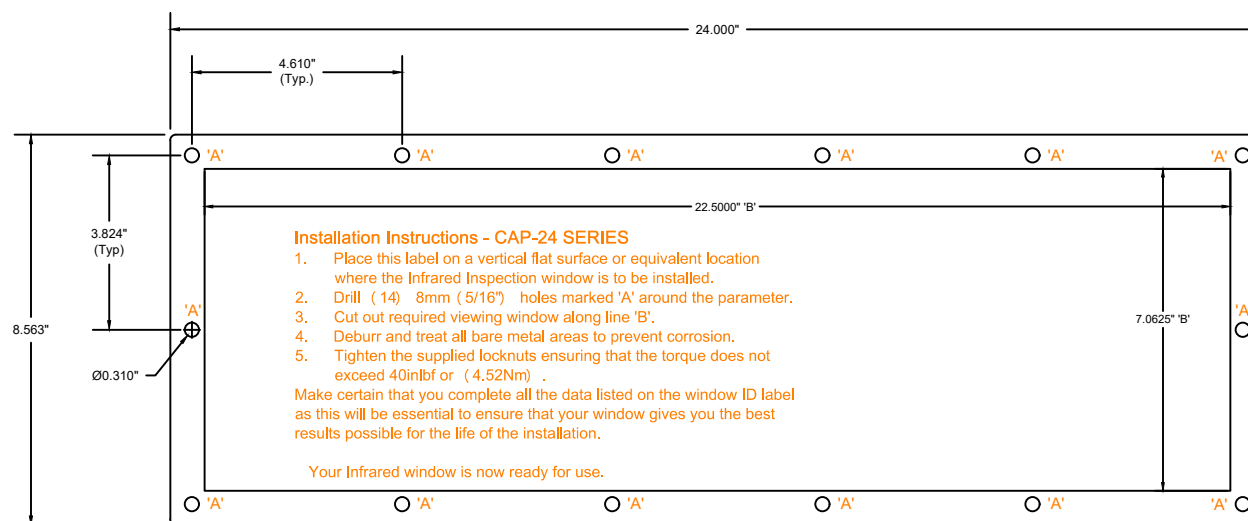
## CAP-12

NOTE: Drawings on the PDF file - not to scale



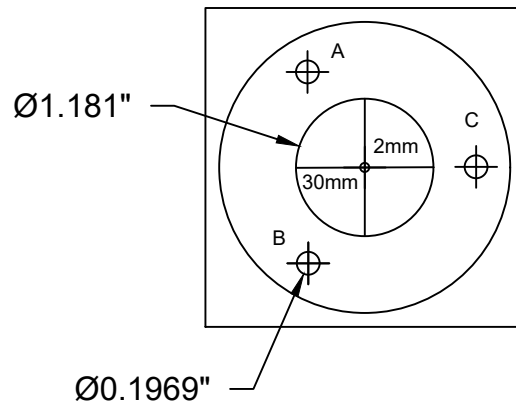
## CAP-18

NOTE: Drawings on the PDF file - not to scale

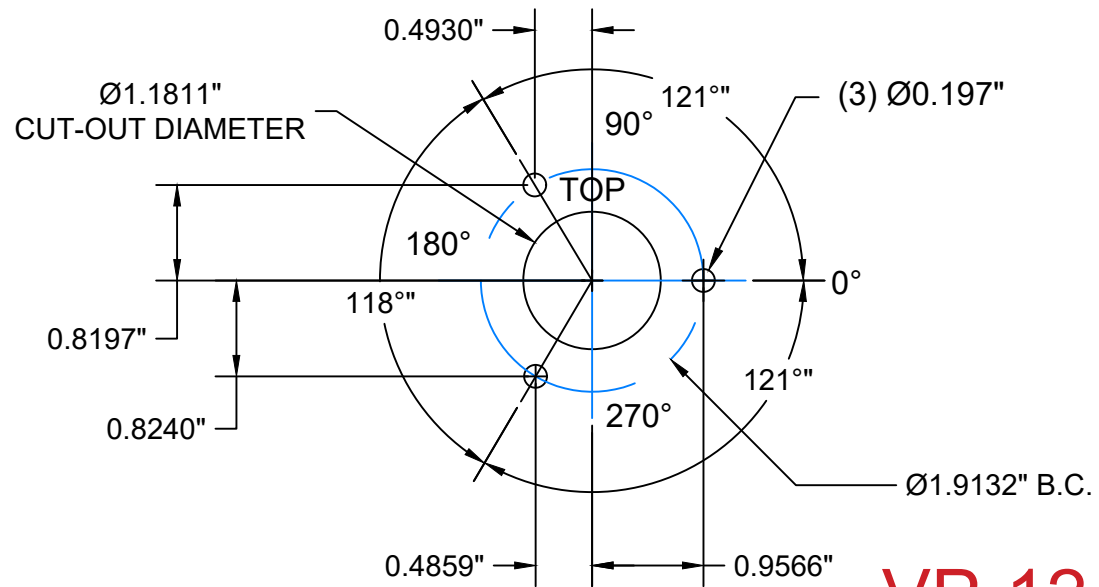


## CAP-24

NOTE: Drawings on the PDF file - not to scale

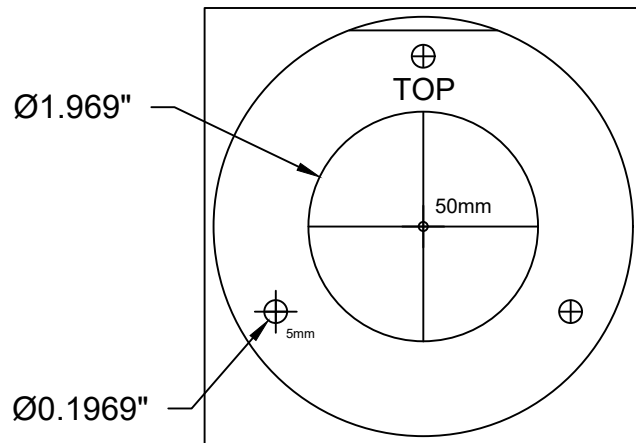


- Fitting Instructions
1. Place this label in the location where the viewing port is to be fitted.
  2. Drill a 2mm pilot hole in the center.
  3. Drill three 5mm holes.
  4. Use a hole saw to cut a 12.52mm hole in the center.
  5. Fit the unit on the front of the panel. Insert fixing screws from the inside, remembering to pass the screws through the thrust ring first. Fully tighten the fixing screws.
  6. Your infrared window is now ready for use.
  7. These devices are rated Type 1, 2, 3, 3R, and 5 when installed on a flat surface of a suitably rated enclosure



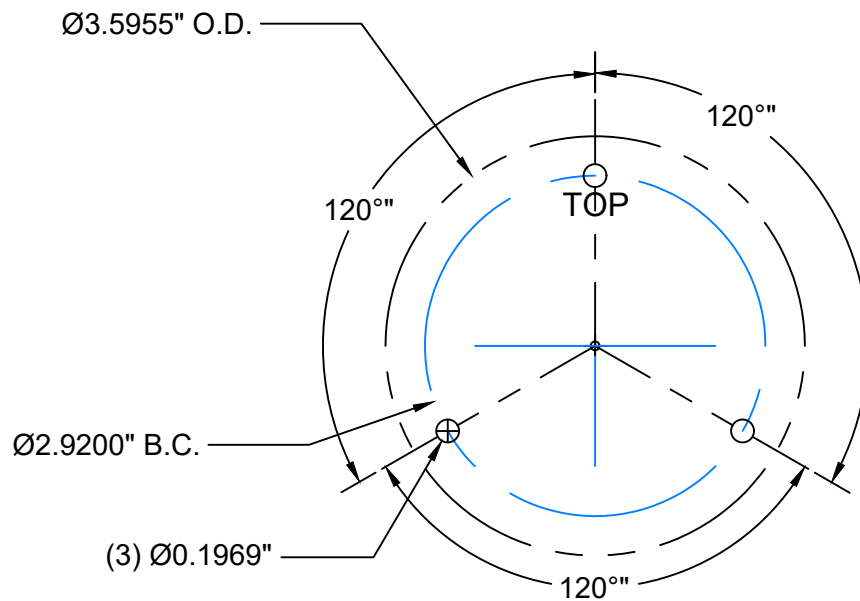
**VP-12-US**

NOTE: Drawings on the PDF file - not to scale



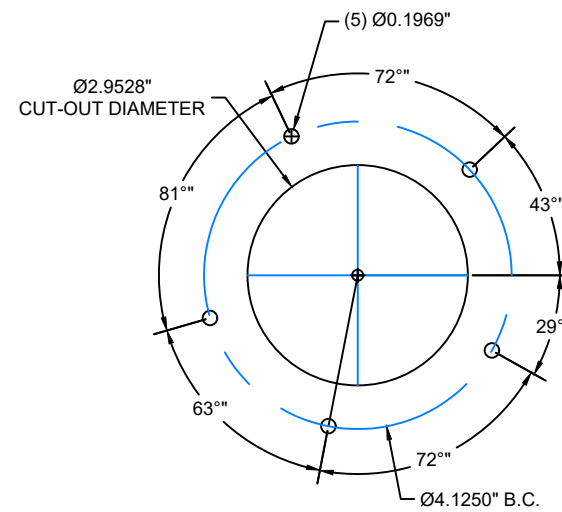
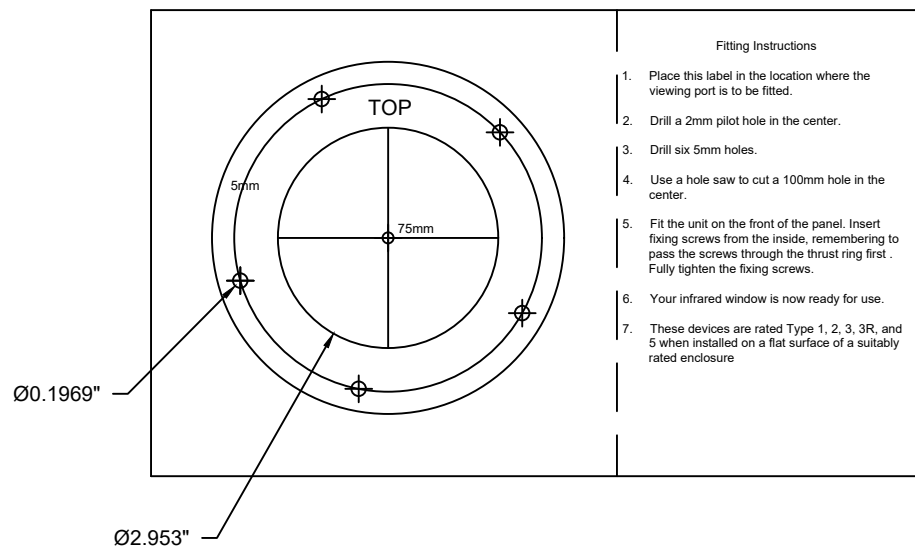
#### Fitting Instructions

1. Place this label in the location where the viewing port is to be fitted.
2. Drill a 2mm pilot hole in the center.
3. Drill three 5mm holes.
4. Use a hole saw to cut a 52.39mm hole in the center.
5. Fit the unit on the front of the panel. Insert fixing screws from the inside, remembering to pass the screws through the thrust ring first. Fully tighten the fixing screws.
6. Your infrared window is now ready for use.
7. These devices are rated Type 1, 2, 3, 3R, and 5 when installed on a flat surface of a suitably rated enclosure



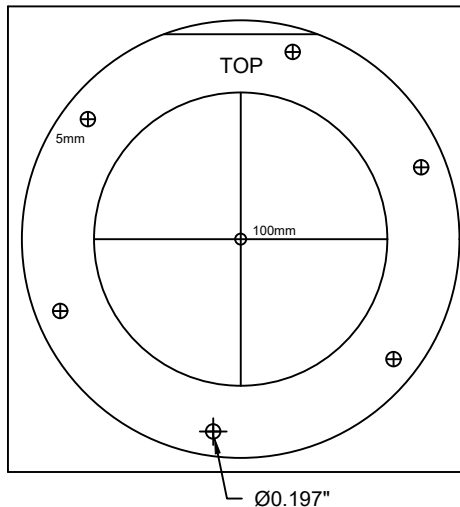
**VPT-50**

NOTE: Drawings on the PDF file - not to scale



## VPT-75

NOTE: Drawings on the PDF file - not to scale



#### Fitting Instructions

1. Place this label in the location where the viewing port is to be fitted.
2. Drill a 2mm pilot hole in the center.
3. Drill six 5mm holes.
4. Use a hole saw to cut a 100mm hole in the center.
5. Fit the unit on the front of the panel. Insert fixing screws from the inside, remembering to pass the screws through the thrust ring first. Fully tighten the fixing screws.
6. Your infrared window is now ready for use.
7. These devices are rated Type 1, 2, 3, 3R, and 5 when installed on a flat surface of a suitably rated enclosure

## VPT-100

NOTE: Drawings on the PDF file - not to scale

